

NORTH ROSEDALE PARK CIVIC
ASSOCIATION PRESENTS

— THE —
COMMUNITY HOUSE
BALLROOM

18445 SCARSDALE STREET,
DETROIT MI 48223





HISTORIC VENUE

Built in 1939, the Community House features many original architectural elements, enjoyed by generations of hosts and visitors alike. Book your special event today to join our storied history.

Office: 313-837-3416
Email: info@nrpca.org



OUR HISTORY

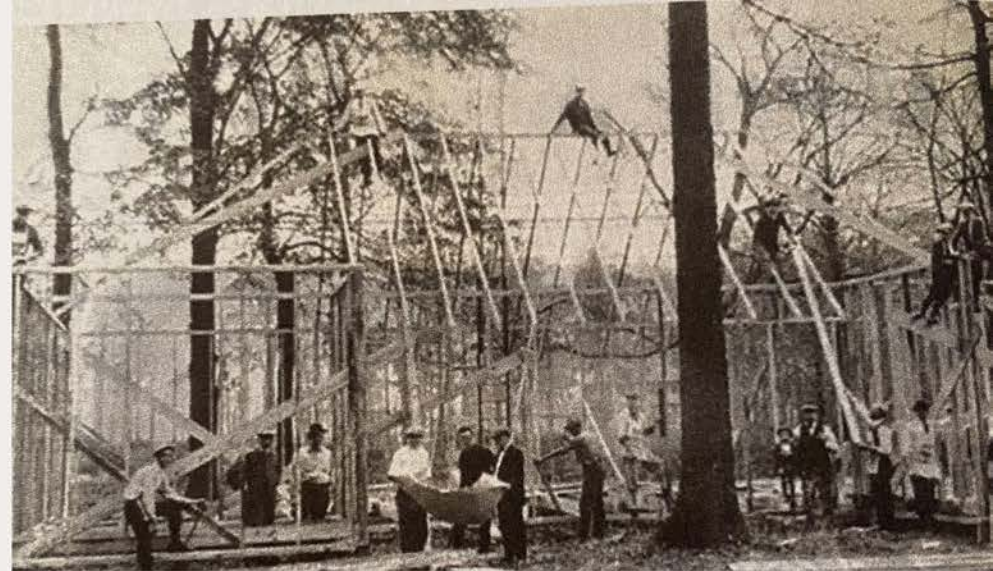
The North Rosedale Park Community House was designed by the residents of North Rosedale Park for community use 100 years ago. The first iteration of the Community House was erected in 1924, led by residents Frank Day Smith and Frank Solar.

The very first clubhouse building cost \$2,000 to construct. Funds were raised through donations from residents and a \$200 loan. Construction took about three months and involved nearly everyone who lived in North Rosedale Park at the time, most of whom had no background in construction. The first clubhouse was a single room, 26 ft x 50 ft, heated by two coal stoves.

By the late 1930s, the clubhouse could no longer accommodate its growing uses by the community. Designed by architect and resident, Morris Webster, ground broke for the new facility on March 29, 1939 which paved the way for the Community House you see today.

In 2011, as the aging Community House approached its 75 th birthday, residents took action again to revitalize the building as part of the "Legacy Project." Resident volunteers raised over \$2.5 million to begin a phased approach to building improvements. We constructed an addition to the South side of the Community House in 2015, complete with handicap-accessible restrooms, among other improvements.

Today, the Community House remains a vital asset to the North Rosedale Park neighborhood and surrounding communities. It remains owned and operated by the North Rosedale Park Civic Association (NRPCA), a 501(c)3 non-profit organization, run by resident volunteers. It is home to many neighborhood festivals, signature events and special occasions. Book your special event with us and join in the long celebrated history of the North Rosedale Park Community House.



CLUBHOUSE CONSTRUCTION, 1924



WHERE YOUR
STORY BEGINS

RESERVATIONS



HOW TO BOOK

- Book directly with our Building Manager at 313.837.3416
- Deposit + Administration Fee are required to hold your date
- Your remaining balance is due 30 days before the event

RENTAL RATE & DEPOSIT

- The rental rate for weddings is \$2,700 (12 hours)
- Additional hours are negotiable
- There is an additional \$250 deposit fee, refundable should no damages or breach of rental agreement occur
- NRPCA members receive a 10% discount on all rental rates

ADMINISTRATION FEE

- There is a required \$500 fee to cover cleaning, security and administration
- NRPCA will provide a security guard who will patrol the parking lot and premises for the duration of your event
- NRPCA will provide a staff member, "House Rep" who will serve as your point person for the duration of your special day

WHAT TO KNOW

CAPACITY

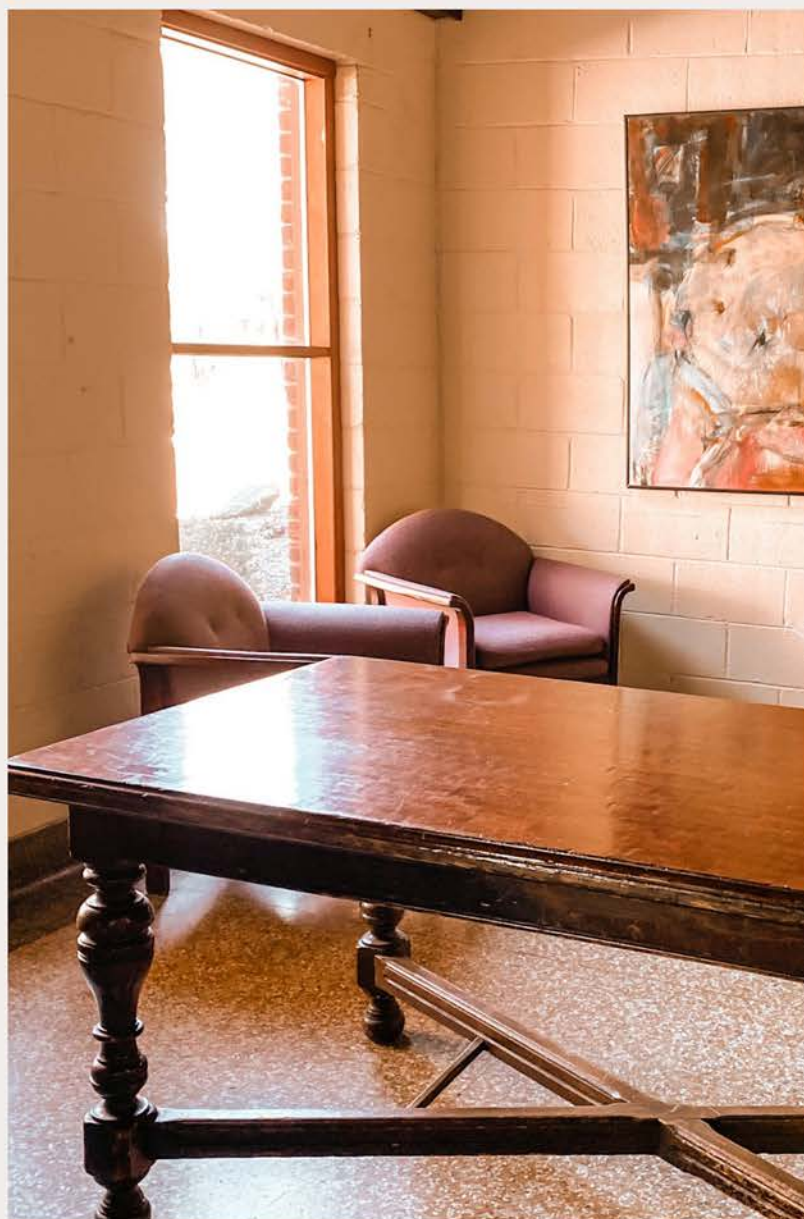
- The Community House ballroom comfortably accommodates 160 guests
- All rentals include the ballroom, lobbies, balcony mezzanine, stage and commercial kitchen

RENTAL TIME

- Your rental rate includes a 12-hour window on the day of your event to include set up and tear down
- Day-of set up can begin as early as 8 am
- Day-of load out must be completed no later than midnight
- Additional rental hours are negotiable
- Need a rehearsal? Reserve the day before your wedding for an additional \$500 between the hours of 4 to 7 pm, or \$1,000 if you're hosting a rehearsal dinner

ADMINISTRATION FEE

Complimentary parking is available. The Community House has 80 parking spaces on site, with additional free street parking. A security guard will monitor the parking lot for the duration of your event.



ABOUT THE BALLROOM



- Hardwood floors and historic wood beam ceilings
- Free wifi, perfect for streaming music
- Complimentary projector available
- Two complimentary easels available for welcome signs, seating charts, etc. Two podiums are also available.
- Rental includes stage & balcony mezzanine
- Handicap accessible restrooms and building entrances
- Adjoins to commercial kitchen
- Adjacent to built-in bar



SPECIAL AMENITIES





TABLES & CHAIRS

Choose to use our complimentary tables and chairs, or opt to bring in your own!

Complimentary Table & Chairs available include:

- 20 60-inch round tables which seat 6-8 guests
- 10 6-ft square tables
- 2 8-ft square tables
- 160 white folding chairs
- 3 additional ornate wood tables are available in lobbies and can be repurposed for cards & gifts, guest books, etc.
- NRPCA staff will provide the initial set up tables and chairs (to your specifications)
- Linens are not included





PARK GROUNDS

Your rental package also includes access to our park grounds and patio.

The Community House is situated on seven acres of beautiful park grounds lined with grassy knolls and dozens of mature trees.



OUTDOOR PATIO



The Community House is home to three works of art –perfect for photo backdrops. Explore the mural on our detached garage, the sculptural works by renowned artist Charles McGee and the mosaic completed by renowned artist Hubert Massey.

The patio connects to the ballroom lobby for easy indoor/outdoor transitions.

FOOD & BEVERAGES

- Adjoining commercial kitchen can be used by licensed caterers with Servsafe Certifications (at no extra charge) to prepare, cook or bake meals. Regardless of license status, all renters may utilize the kitchen for staging, refrigeration and complimentary ice
- We have no limitations on which vendors you choose to work with!
- Spirits, beer and champagne are permitted



COMMERCIAL KITCHEN

WEDDING PARTY SUITES



- We have two private rooms typically used by wedding parties to prepare for their event
- Our lower suite, sometimes referred to as a "Bridal Room," is located on the ground floor and features a sitting area, full length mirror, private restrooms, and a vanity
- Our upper suite offers additional private space which is often used when couples wish to get ready separately





BAR & COAT CHECK

In one of two lobbies at the venue, guests are welcome to make use of our built-in bar and coat rack.



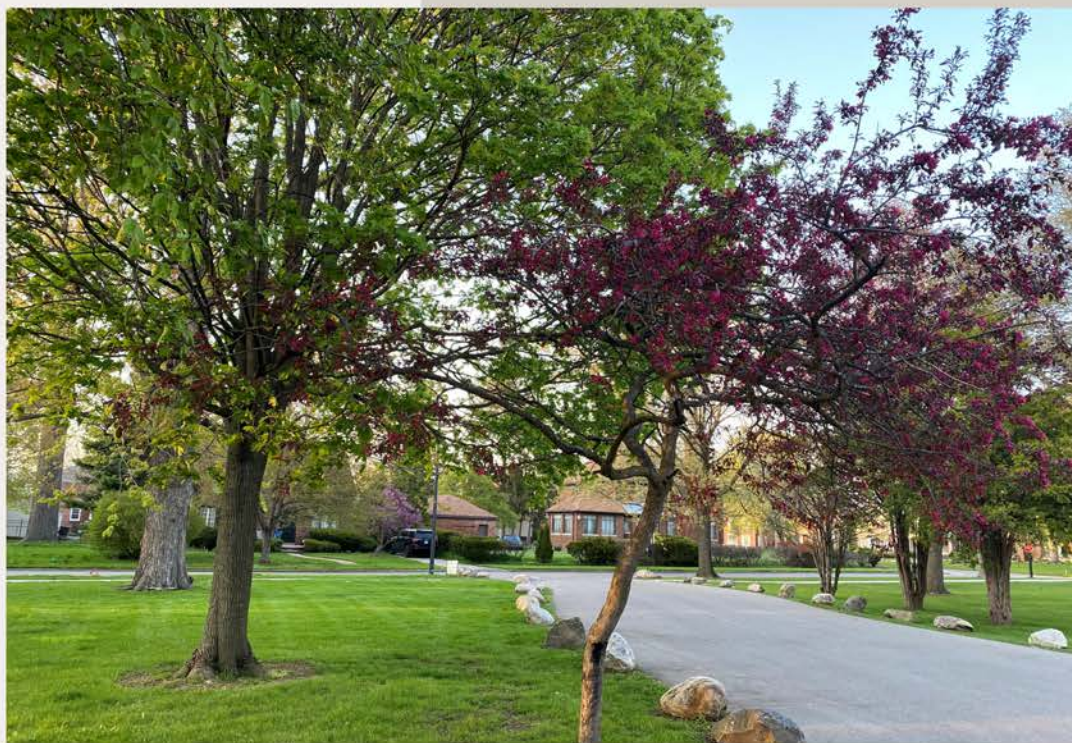
We know wedding planning is stressful (at every stage). Even after you've booked, we know that you may want to stop by the venue space to get measurements, show vendors around or to imagine your décor in ballroom.

Our building manager is available for venue tours on the following days and times:

- Monday 10:00am-3:00pm
- Tuesday 10:00am-2:00pm
- Thursday 10:00am-2:00pm
- Friday 10:00am-2:00pm

Call 313-837-3416 to schedule your drop-in!

VENUE TOURS



FLOOR PLAN

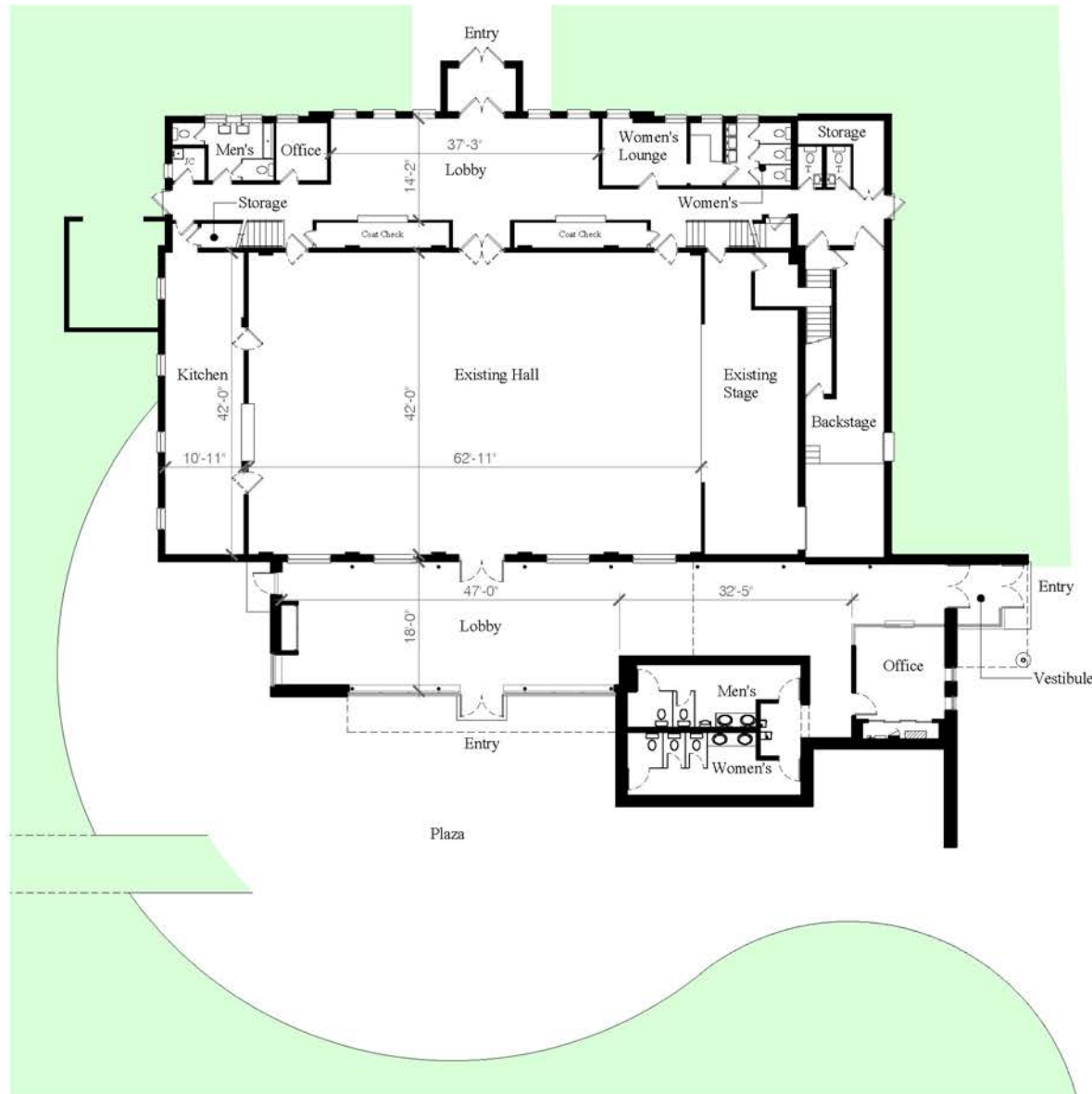
Use this floor plan to map out your layout

Constantine George Pappas AIA
Architecture / Planning
125 S. Washington Ave Royal Oak, MI 48067
P. 248.629.8998 F. 248.298.3192

Project

North Rosedale Park
Community Center Addition
Detroit, Michigan

Project No. 201325
May 18, 2018



Overall Floor Plan

Scale: 1/16" = 1'-0"

